

Caution! Fake!

After the International Forum of the Food Industry and Packaging (IFFIP) in April 2019, we note with great regret the appearance on the market of low-quality fakes under the previously presented manual marking machine Ink Jet Mobile.

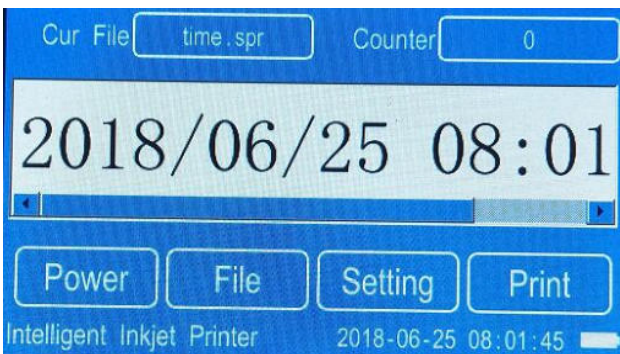
Unscrupulous businessmen looked at the exhibition booth of new equipment and, seeing the extraordinary popularity among the customers of our reliable and high-quality manual marking machine Ink Jet Mobile, decided to flood the market with cheap Chinese fakes and do dumping.

Now the Internet and various marketplaces are filled with offers of markers of dubious origin and quality from different companies, which often have nothing to do with the packaging industry.

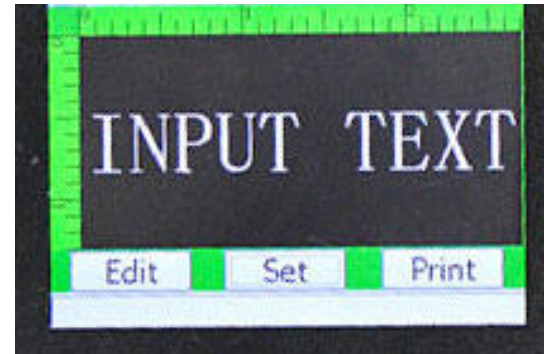
We have carefully studied the counterfeit markers and found out what surprises and dangers await the buyer.

First of all, the original marking machine has a body of high-quality metal. In fakes using inexpensive plastic, which reduces the durability and reliability of the device.

This is the original Ink Jet Mobile menu.



It looks like a fake menu



Our original battery has a capacity of 2100mAh and 2600mAh.

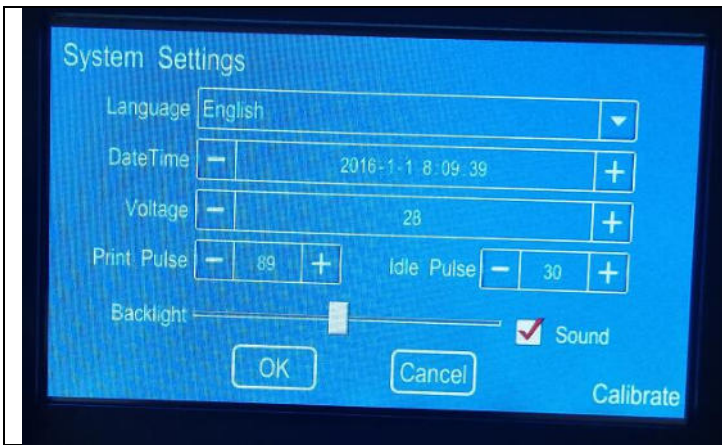


The counterfeit battery has a capacity of 1500mAh and is made of ordinary household items.

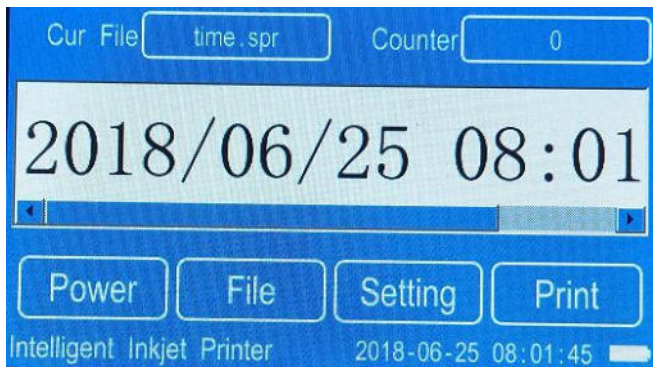


For each type of cartridge in our markirator, you can set individual parameters of voltage and pulse, which guarantees high quality prints for any type of cartridge.

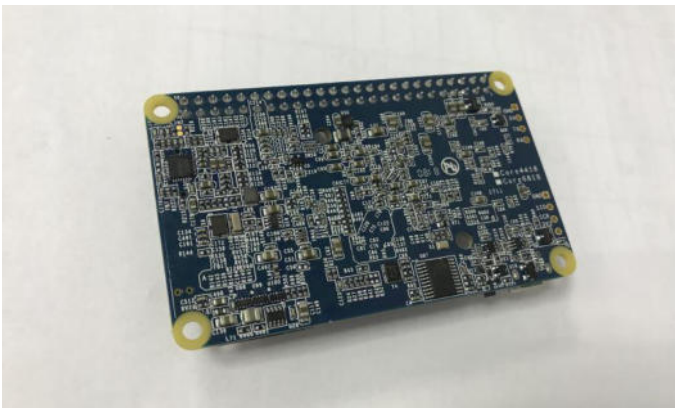
There is no possibility to set the voltage and impulse in the forgery, the average value is "sewn up" in the marking machine, and the print on different cartridges will be of different quality. This is done in order to later sell the client only the most expensive cartridges.



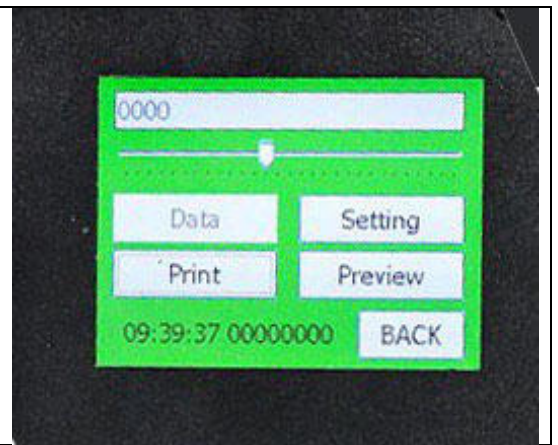
The working interface of our markirator displays real time, a print unit counter, the name of the file with this marking, a battery charge indicator.



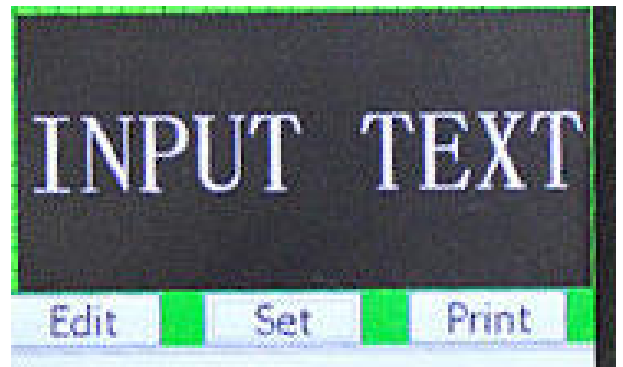
The motherboard of our markirator is manufactured industrially, based on a 4-core processor and does not contain capacitors.



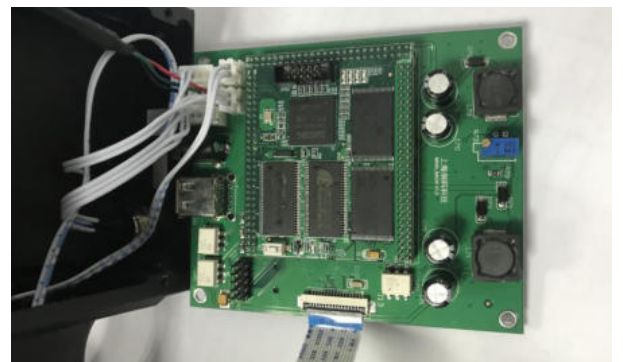
In our marker, the display (touchscreen) is made separately from the display board, this removes the need for costly replacement in case of damage to the display.



In the fake interface, only the label text is visible.



The fake motherboard is made by hand soldering, has a 1-core processor of the 2000 sample and contains capacitors, which tend to boil over time.



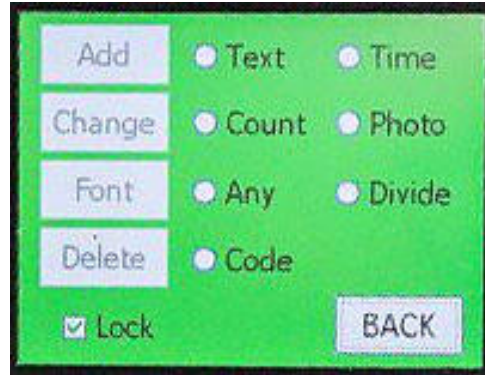
In a fake display (touchscreen) is made together with the display board, in case of damage to the display, you will need to replace the display board.



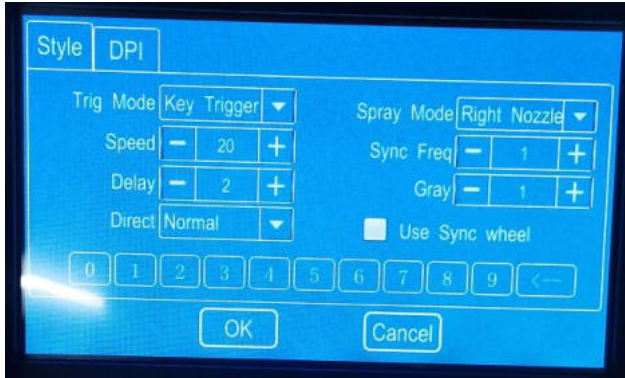
Our original marking machine has a clear and friendly interface. All tools are located in the working area in the form of palettes.



Due to the outdated display with minimal resolution on the fake screen does not fit all the tools of the editor. You do not see the result of editing, marking is very difficult to change.



The original marking machine has a large selection of cartridges. Each cartridge type has its own pulse and voltage values to ensure the best print result. The operator is available and other settings to improve print quality.



There is no possibility to change the synchronization settings, print speed, select the right or left cartridge nozzle array. Print poor quality, ink overruns, persistent problems when switching from one cartridge to another.

